



MONTHLY REPORT
TOMATO
(JULY, 2019)



Horticulture Statistics Division
Department of Agriculture, Cooperation & Farmers Welfare
Ministry of Agriculture & Farmers Welfare
Government of India
New Delhi

1. PRODUCTION

- Major Tomato producing states in the country are Andhra Pradesh, Madhya Pradesh, Karnataka, Gujarat, Odisha, West Bengal, Chhattisgarh, Bihar, Haryana, Uttar Pradesh, Maharashtra, Tamil Nadu, Telangana and Chhattisgarh. These states account for 90% of the total production of the country
- Production of Tomato during the year 2018-19 (Second Advance Estimate) is estimated to be about **slightly lower** as compared to the previous year. **(Table-1.2)**
- Details regarding seasonality and harvesting period of Tomato crop in the country are given in **Table-1.1**

Table-1.1: TOMATO TRANSPLANTING AND HARVESTING PERIOD

Region	Transplanting	Harvesting Period
Southern & Western States	A-June- July	A- August - September
	B-October - November	B- December - February
	C-January- February	C-March - June
Northern & Eastern States	A- October- November	A- January - March
	B- January - February	B- March - June
Hilly States	A- May- June	A- July - September
	B-October - November	B-December - March

Table-1.2: STATE WISE TOMATO PRODUCTION IN THE COUNTRY**(Production in '000 Tonnes)**

STATE/UTs	Five year Average (2013-14 to 2017-18)		2017-18		2018-19 (2nd A.E.)	
	Production	% Share	Production	% Share	Production	% Share
Andhra Pradesh	2857.98	15.15	2744.32	13.89	2607.53	13.26
Madhya Pradesh	2307.82	12.23	2419.28	12.24	2573.28	13.09
Karnataka	2029.47	10.76	2081.59	10.53	2440.33	12.41
Gujarat	1321.30	7.00	1357.52	6.87	1371.10	6.97
Odisha	1335.03	7.08	1312.07	6.64	1312.08	6.67
West Bengal	1198.76	6.35	1265.25	6.40	1268.12	6.45
Chhattisgarh	952.29	5.05	1087.33	5.50	1130.35	5.75
Bihar	1012.07	5.36	941.56	4.77	968.78	4.93
Haryana	673.31	3.57	753.72	3.81	911.43	4.64
Uttar Pradesh	646.83	3.43	841.61	4.26	844.01	4.29
Maharashtra	1030.04	5.46	1086.56	5.50	830.86	4.23
Tamil Nadu	564.53	2.99	887.08	4.49	814.55	4.14
Telangana	1146.26	6.08	1171.50	5.93	701.42	3.57
Himachal Pradesh	457.05	2.42	481.94	2.44	484.10	2.46
Assam	412.25	2.18	396.24	2.01	417.86	2.13
Jharkhand	246.46	1.31	265.26	1.34	268.93	1.37
Punjab	196.56	1.04	224.26	1.13	252.63	1.28
Uttrakhand	104.03	0.55	103.85	0.53	103.89	0.53
Rajasthan	83.90	0.44	88.73	0.45	90.00	0.46
Jammu & Kashmir	81.95	0.43	52.96	0.27	79.95	0.41
Tripura	50.13	0.27	56.50	0.29	56.50	0.29
Meghalaya	41.49	0.22	35.51	0.18	34.91	0.18
Manipur	37.10	0.20	33.72	0.17	33.23	0.17
Nagaland	20.95	0.11	22.47	0.11	22.47	0.11
Mizoram	10.66	0.06	11.87	0.06	12.23	0.06
Sikkim	6.90	0.04	8.03	0.04	8.11	0.04
Kerala	20.78	0.11	12.61	0.06	4.82	0.02
Arunchal Pradesh	7.02	0.04	2.15	0.01	2.15	0.01
Others	15.36	0.08	13.84	0.07	14.66	0.07
TOTAL	18868.28	100.00	19759.32	100.00	19660.28	100.00

Source: State Departments of Horticulture & Agriculture

2. CURRENT STATUS

- Harvesting of summer Tomato is started in Karnataka, Andhra Pradesh, Maharashtra, Himachal Pradesh and Uttrakhand
- Quality of Tomato coming in market is medium to good
- Transplanting of seedlings of Kharif Tomato is completed in Maharashtra, Karnataka, Andhra Pradesh and Telangana

3. MONTHLY ARRIVAL

- The All India monthly arrivals of Tomato for five years (2013-2017) along with the monthly arrival of 2018 and 2019 are given in **Table-3.1 and Figure-3.1**.
- The arrival of July, 2019 is lower than June of previous year and also from average of five years (2013-2017)

Table-3.1: ALL INDIA MONTHLY ARRIVALS OF TOMATO

Arrivals in '000 Tonnes

Month	All India Arrivals		
	Five Year Average (2013-2017)	2018	2019
January	394.95	315.69	239.64
February	264.66	277.57	209.14
March	255.60	273.20	211.00
April	253.59	239.62	209.76
May	291.65	303.30	207.82
June	284.07	338.44	228.46
July	275.44	392.71	264.78
August	301.92	417.35	
September	369.56	450.24	
October	338.53	443.29	
November	329.75	300.57	
December	294.74	275.37	

Source: AGMARKNET

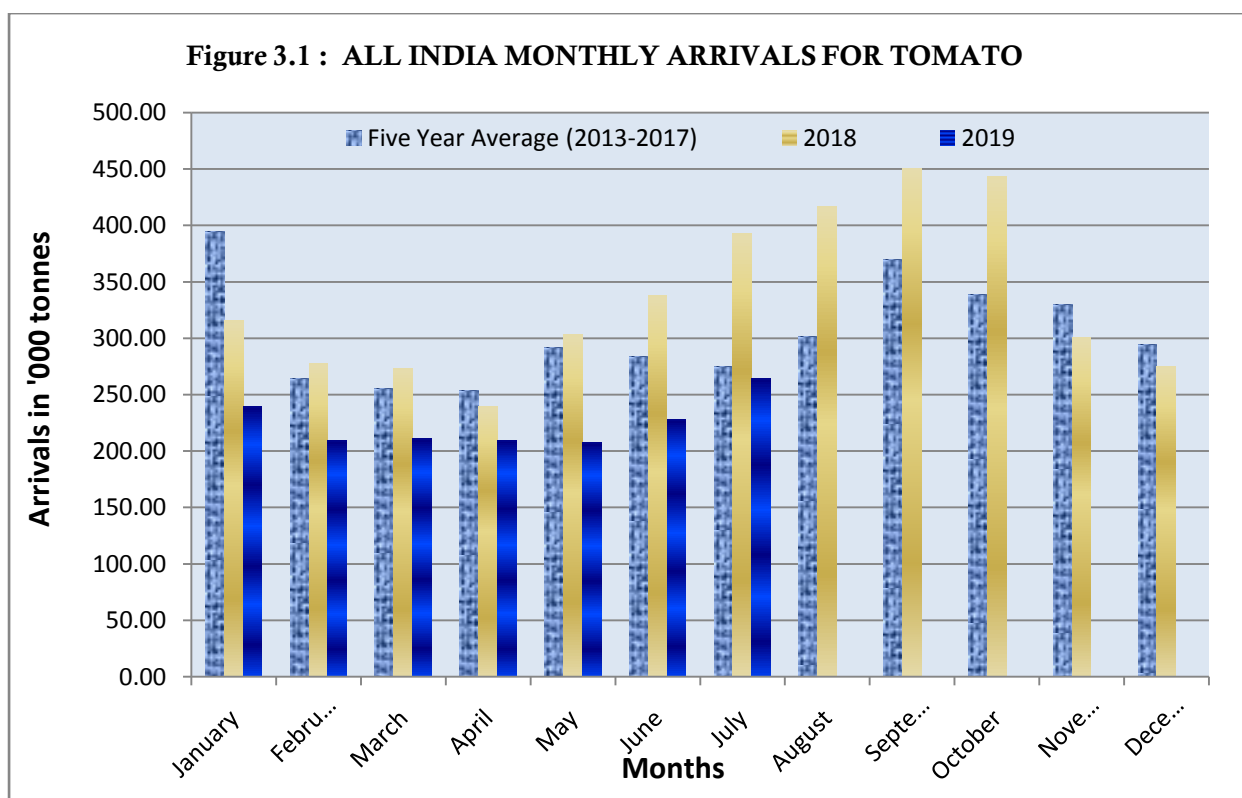


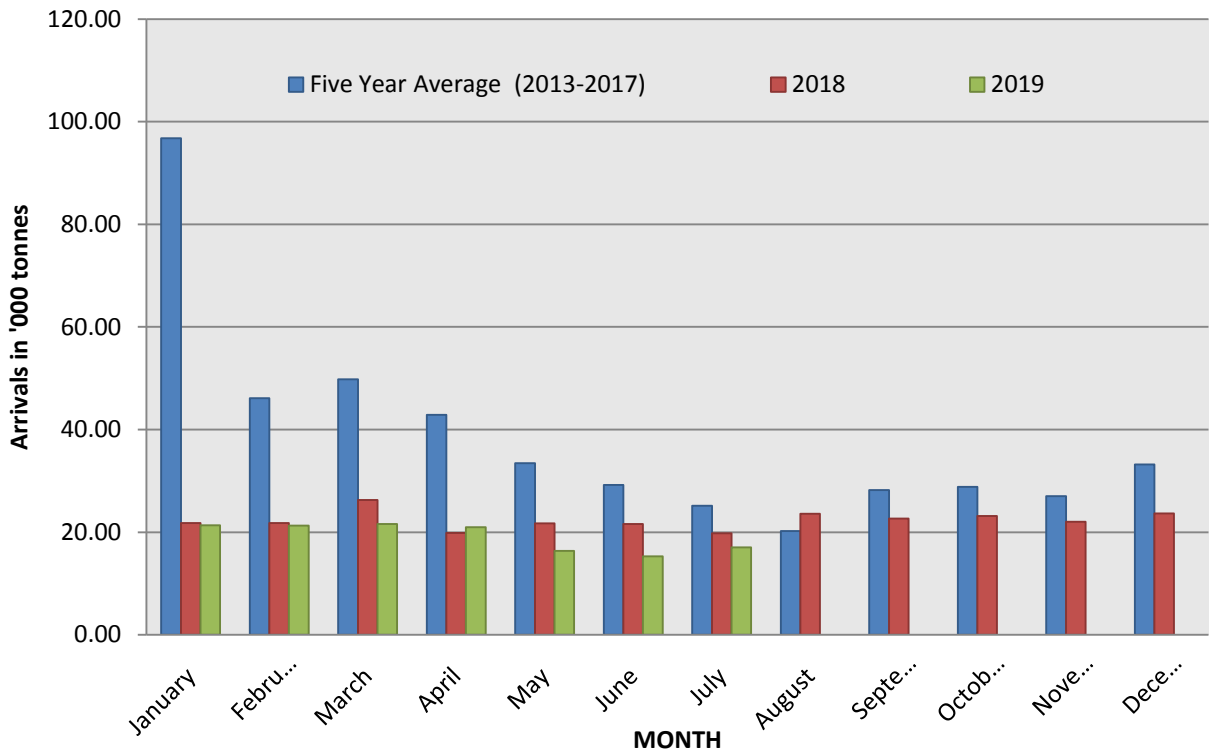
Table-3.2: MONTHLY ARRIVALS OF DELHI

Arrivals in '000 Tonnes

Month	Market Arrivals of Delhi		
	Five Year Average (2013-2017)	2018	2019
January	96.79	21.79	21.37
February	46.13	21.80	21.28
March	49.77	26.28	21.58
April	42.87	19.82	20.98
May	33.44	21.73	16.38
June	29.20	21.57	15.30
July	25.13	19.76	17.03
August	20.19	23.61	
September	28.20	22.66	
October	28.83	23.17	
November	27.05	22.03	
December	33.19	23.68	

Source: AGMARKNET

Figure 3.2 : MONTHLY ARRIVALS OF TOMATO IN DELHI



4. WHOLESALE PRICES

Table-4.1: STATE WISE AVERAGE WHOLESALE PRICES

State	Monthly Average Wholesale Prices			% variation over month of June, 2019	% variation over month of July, 2018
	(Rs/Quintal)				
	July, 2019	June, 2019	July, 2018		
Andaman and Nicobar	10000.00	9538.46	NA	4.84%	NA
Andhra Pradesh	2158.90	1803.59	1235.90	19.70%	74.68%
Assam	3540.90	2986.22	3121.03	18.57%	13.45%
Chandigarh	2096.63	1071.31	1517.28	95.71%	38.18%
Chhattisgarh	2590.47	2411.64	2030.86	7.42%	27.56%
Gujarat	2714.62	2238.02	2044.99	21.30%	32.74%
Haryana	1859.22	1425.72	1960.56	30.41%	-5.17%
Himachal Pradesh	2194.50	1711.94	1421.79	28.19%	54.35%
Jammu and Kashmir	2469.89	2014.15	1263.66	22.63%	95.46%
Jharkhand	2274.95	3400.00	NA	-33.09%	NA
Karnataka	1893.97	1699.12	1144.50	11.47%	65.48%
Kerala	2977.36	3506.56	2244.65	-15.09%	32.64%
Madhya Pradesh	1562.36	1197.64	1395.98	30.45%	11.92%
Maharashtra	1830.24	1730.64	1470.79	5.76%	24.44%
Meghalaya	3950.71	3425.87	1622.45	15.32%	143.50%
Mizoram	6754.37	5771.60	5002.20	17.03%	35.03%
Nagaland	4957.42	6905.88	4392.34	-28.21%	12.87%
NCT of Delhi	2423.21	1310.02	1829.54	84.98%	32.45%
Odisha	3786.97	3845.93	2251.09	-1.53%	68.23%
Punjab	1559.89	855.79	1270.18	82.27%	22.81%
Rajasthan	1984.78	1269.50	1845.80	56.34%	7.53%
Telangana	2958.14	2705.74	1882.81	9.33%	57.11%
Tripura	5034.92	4106.47	2553.03	22.61%	97.21%
Uttar Pradesh	1948.99	1820.77	1989.20	7.04%	-2.02%
Uttrakhand	751.19	622.35	775.12	20.70%	-3.09%
West Bengal	3671.69	3761.50	2801.49	-2.39%	31.06%
Average	3074.86	2812.94	2044.47	9.31%	50.40%

Source: AGMARKNET

Table-4.2: MONTHLY AVERAGE WHOLESALE PRICES OF TOMATO IN DELHI

(Prices in Rs/Quintal)

Month	2015	2016	2017	2018	2019
January	1443.6	1433.9	562.0	914.5	1072.74
February	1486.8	1093.1	715.2	704.5	1141.52
March	1401.8	838.3	905.8	642.5	1570.3
April	1278.7	675.3	775.9	600.0	1273.2
May	1405.7	733.6	541.7	342.1	1569.9
June	1172.9	1853.0	1192.1	633.3	1310.0
July	1611.9	2491.6	4049.7	1829.5	2423.2
August	1375.3	1403.3	3707.2	1381.2	
September	1679.6	1496.8	1931.5	1032.5	
October	1699.5	1306.5	2462.1	1176.2	
November	2161.9	848.6	3390.8	1115.2	
December	1621.7	590.5	1506.2	931.8	

Source: AGMARKNET

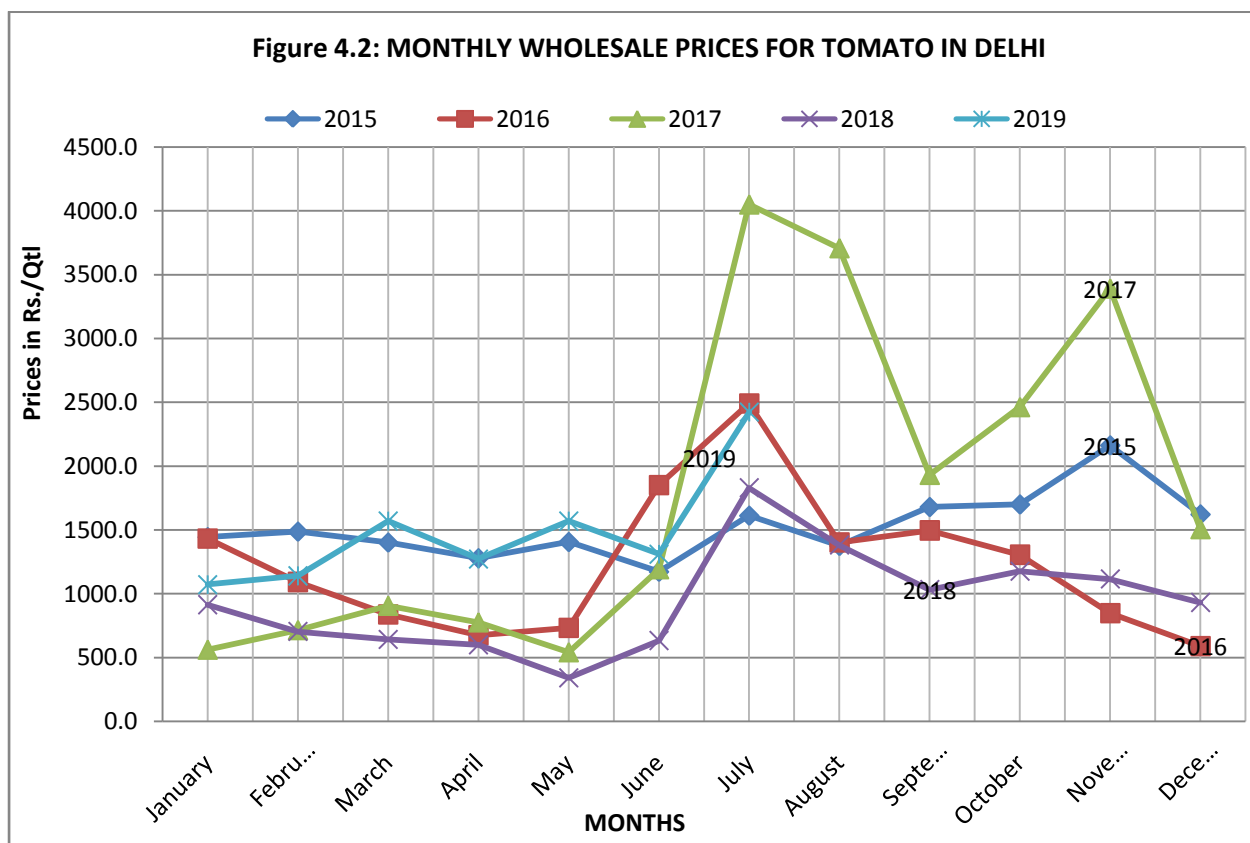
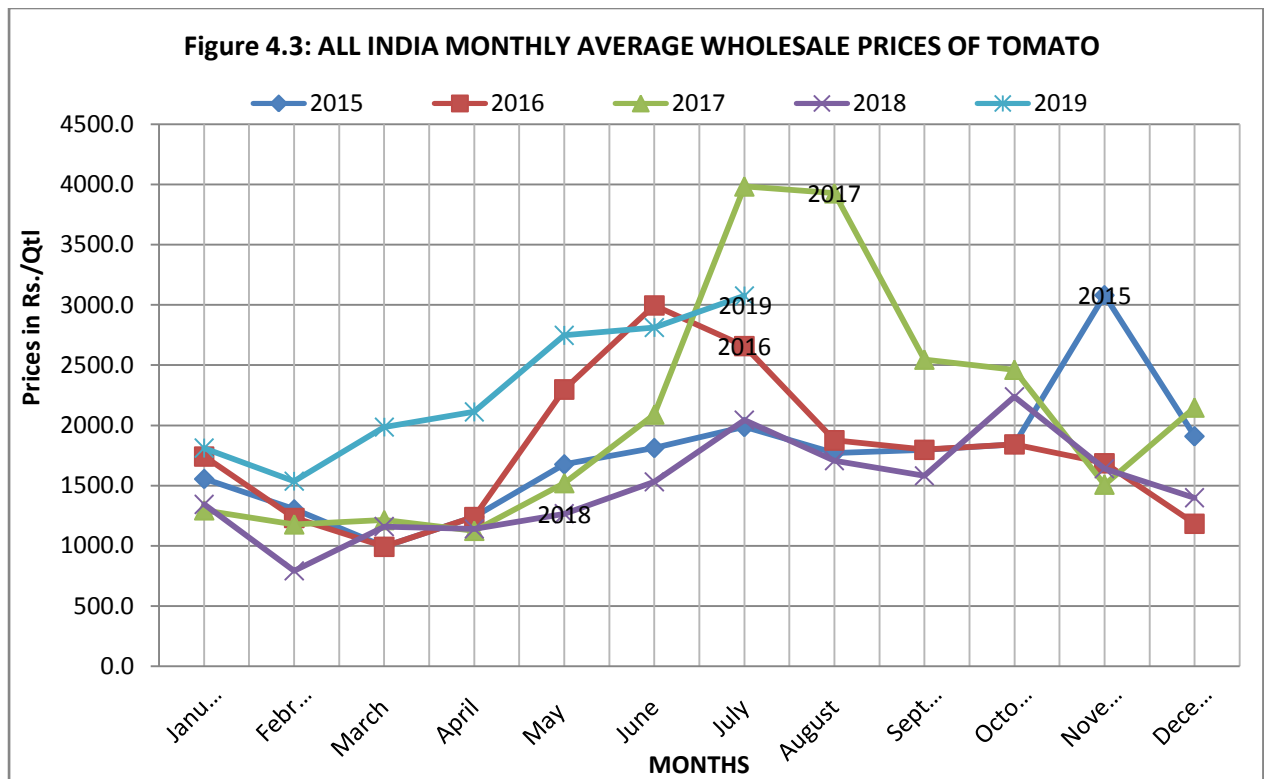


Table-4.3: ALL INDIA MONTHLY AVERAGE WHOLESALE PRICES OF TOMATO

(Prices in Rs./Quintal)

Month	2015	2016	2017	2018	2019
January	1555.5	1742.0	1294.4	1343.7	1811.8
February	1302.7	1231.5	1177.4	791.8	1537.0
March	992.4	992.4	1213.1	1160.0	1986.3
April	1239.9	1239.9	1123.9	1140.5	2112.1
May	1676.6	2298.6	1520.1	1266.1	2747.4
June	1812.6	2995.3	2089.6	1531.0	2812.9
July	1987.2	2658.4	3984.7	2044.5	3074.9
August	1768.2	1876.0	3927.6	1706.8	
September	1797.4	1797.4	2546.2	1582.1	
October	1841.7	1841.7	2462.1	2238.7	
November	3081.5	1685.8	1507.6	1639.5	
December	1909.7	1182.8	2147.8	1399.2	

Source: AGMARKNET



5. EXPORT

Table-5.1: MONTHLY EXPORT OF TOMATO

Month/Year	Export			
	2018		2019	
	Value in Rs. Crore	Qty in Tonnes	Value in Rs. Crore	Qty in Tonnes
January	5.32	3041.86	7.89	3095.37
February	3.73	2329.87	4.45	1722.98
March	4.25	2450.90	3.52	2593.09
April	3.83	2747.18	2.61	2026.36
May	4.11	2863.42	3.07	1763.65
June	6.18	2797.88	4.39	2215.79
July	17.16	6134.31		
August	23.99	8972.58		
September	40.82	15922.21		
October	76.20	24163.27		
November	57.21	22834.86		
December	16.38	5953.97		
Total	259.18	100212.31	25.93	13417.24

Source: DGCI&S
